



# Vario Nameplates

## Cobal Accessories

Effortless in both aesthetic purity and functionality, the Vario is an interchangeable nameplate holder. It adjusts to fit on all office screens, providing the flexibility to customise your workspaces with your own printed inserts.

# Vario Nameplates

Vario fixed with tape



Vario on hook bracket



Vario on square saddle bracket



Vario on curved saddle bracket



# Technical Details

## Dimensions

Width  
150mm or 210mm

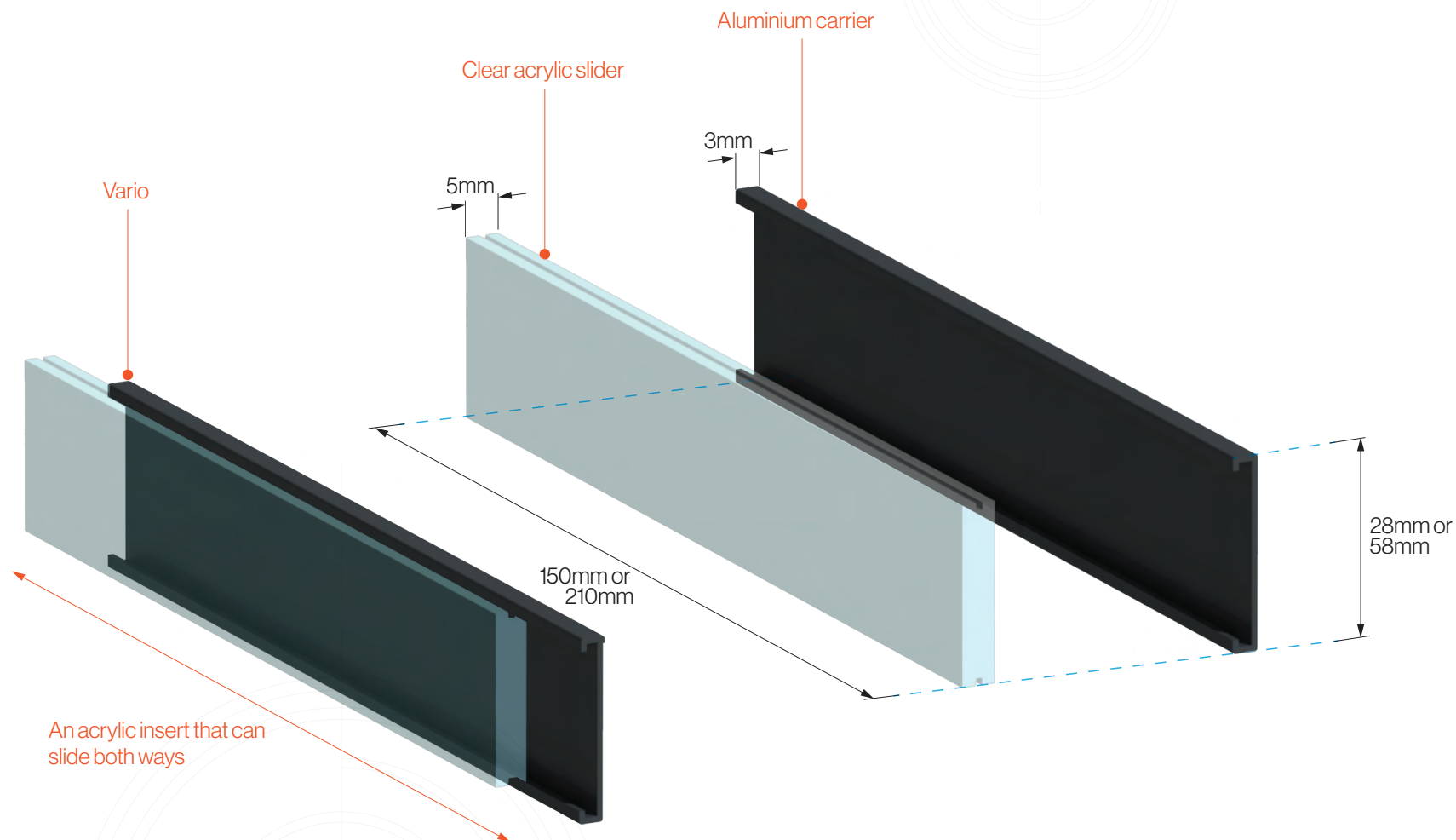
Height  
28mm or 58mm

## Colours

RAL 9003 Satin White

RAL 9017 Satin Black

RAL 9006 Satin Silver



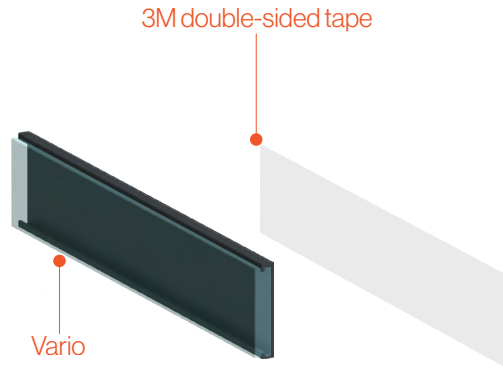
# Fixings

The standard fixing for a Vario is 3M double-sided tape.

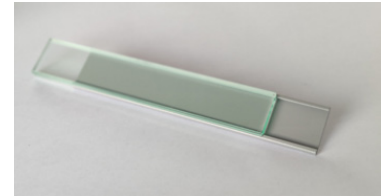
## 3M Double-Sided Tape

Dimensions:

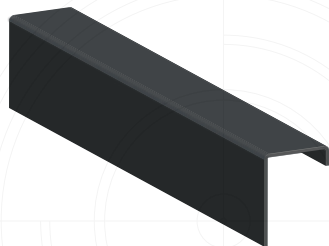
- A. Same as Vario length
- B. Same as Vario height
- C. Internal width to suit your needs



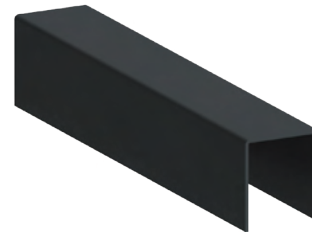
Vario with 3M tape



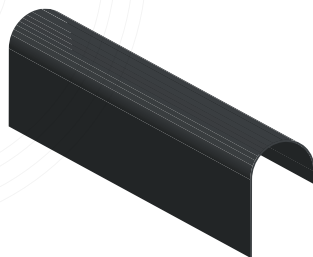
The diagrams below illustrate the brackets that are also available for desk screens and dividers.



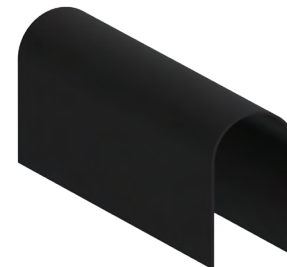
Square hook bracket



Square saddle bracket



Curved hook bracket



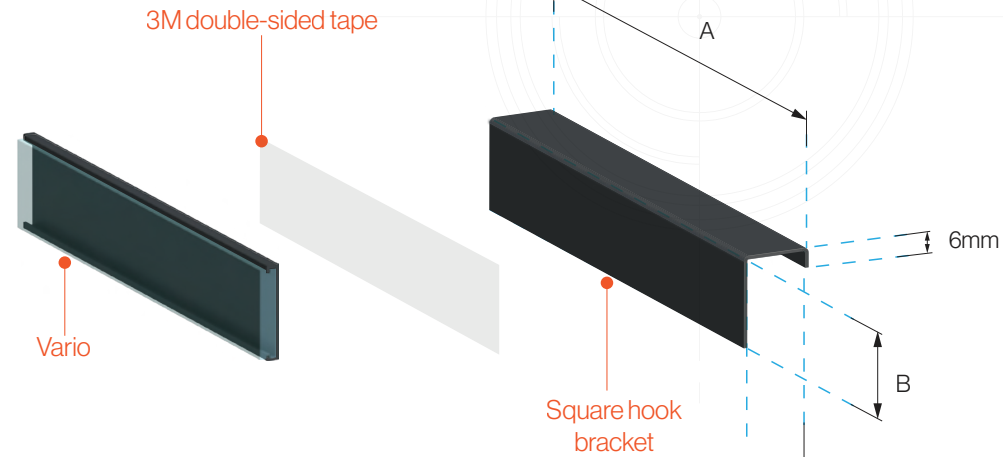
Curved saddle bracket

## Square Hook Bracket

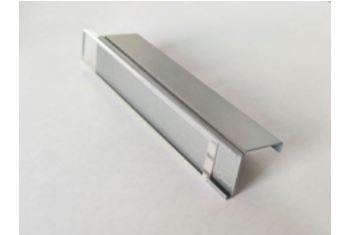
The Vario is attached to the saddle bracket with 3M double-sided tape.

Dimensions:

- A. Same as Vario length
- B. Same as Vario height
- C. Internal width to suit your needs



Vario on square hook bracket

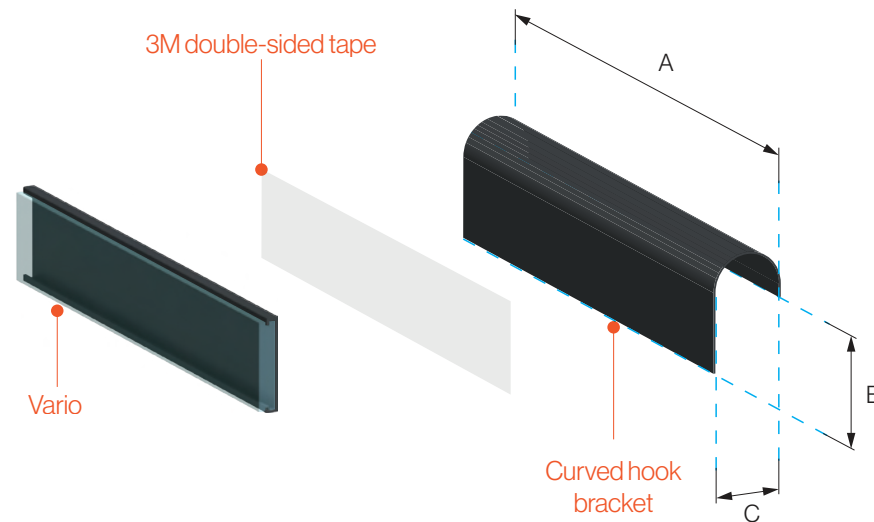


## Curved Hook Bracket

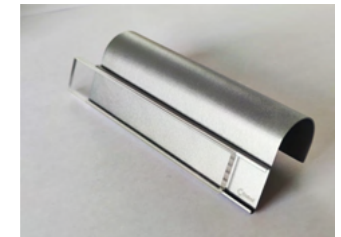
The Vario is attached to the curved bracket with 3M double-sided tape.

Dimensions:

- A. Same as Vario length
- B. Same as Vario height
- C. Internal width to suit your needs



Vario on curved hook bracket

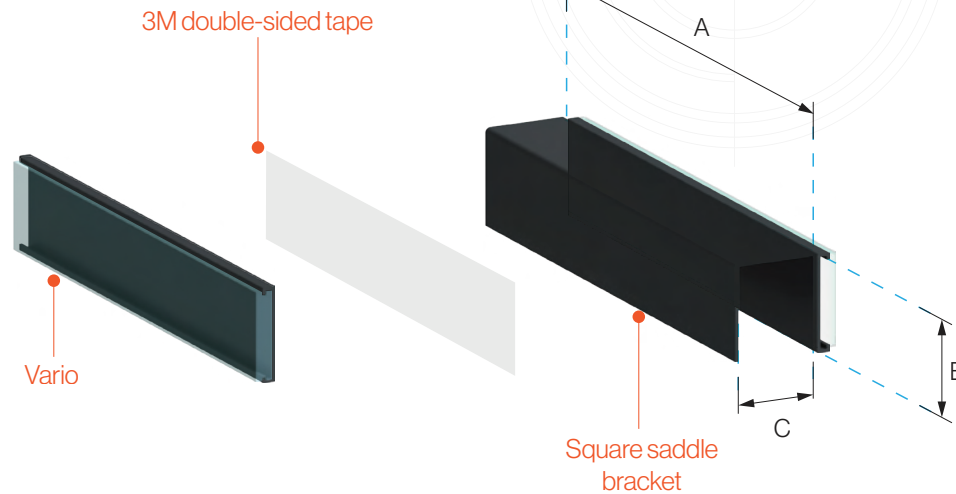


## Square Saddle Bracket

The Vario is attached to the saddle bracket with 3M double-sided tape.

Dimensions:

- A. Same as Vario length
- B. Same as Vario height
- C. Internal width to suit your needs



Vario on square saddle bracket

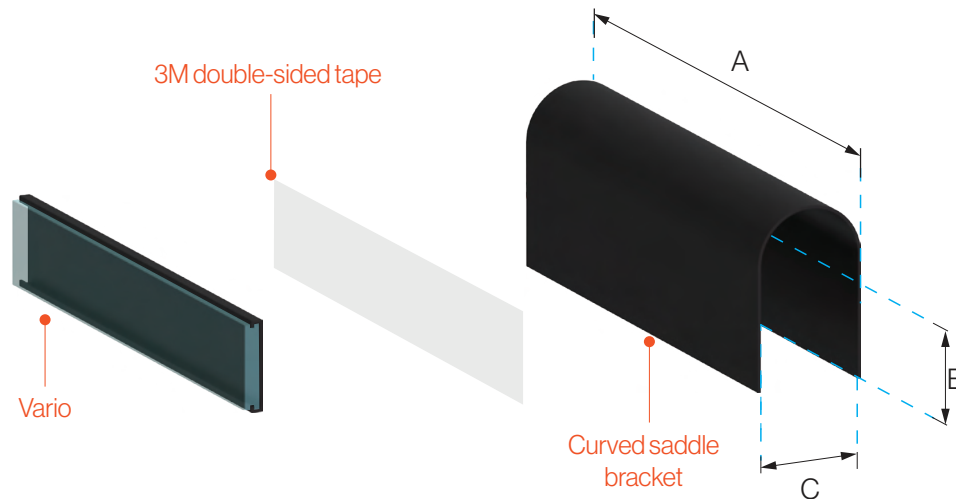


## Curved Saddle Bracket

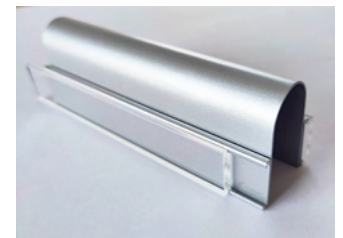
The Vario is attached to the curved bracket with 3M double-sided tape.

Dimensions:

- A. Same as Vario length
- B. Same as Vario height
- C. Internal width to suit your needs



Vario on curved saddle bracket



# Header

An optional header can be afixed to the top of the Vario to act as a door sign indicating room names and numbers.

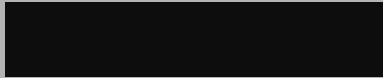
## Dimensions

Width  
Same as Vario width

Height  
30mm or 58mm

## Materials

Acrylic



Stainless steel



Plywood

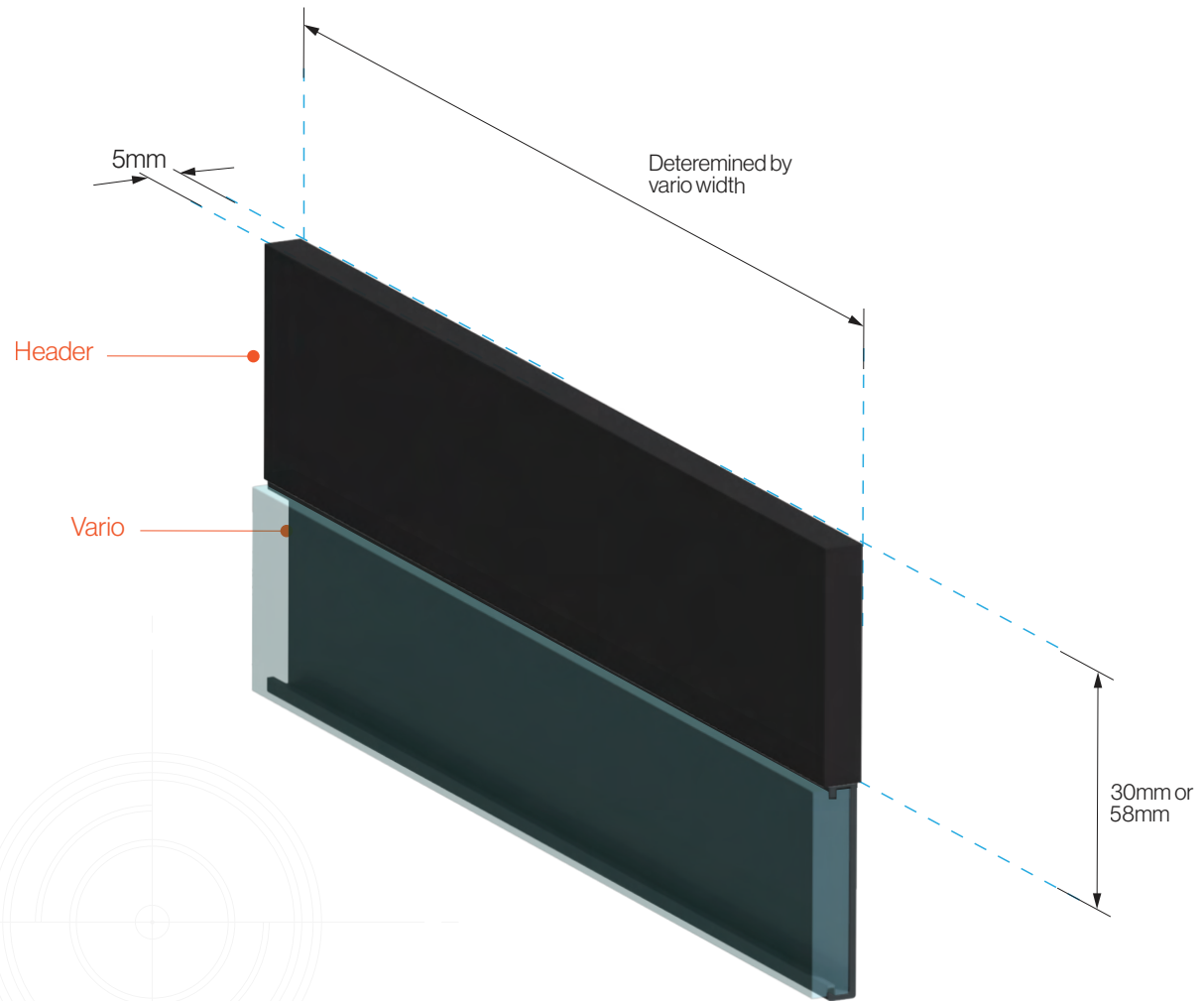


## Colours

Acrylic headers are matt black as standard or they can be painted any colour from the standard RAL colour range.

## Header Text

Text will be printed directly onto the substrate. For a more bespoke option we also offer laser etching.





# Vario Nameplates with Header

Acrylic header



Stainless steel header

Adding multiple Varios beneath a header will create a modular door sign system, which can be used as a directory.



Plywood header





# Craftsmanship

We are Master craftspeople with immense passion and an obsession for the finest detail. We only use the best materials to achieve results of the highest standard. In addition to access to the latest technology, we take the time-honoured route to get it just right.

Saddle bracket being folded



Colour sprayed by hand



Direct to media printing with UV ink



3M tape application



Laser etched graphics and text



Vinyl numbering being applied to header





## Contact

[info@cobal.co.uk](mailto:info@cobal.co.uk)

+44 (0) 1635 570 600

[www.cobal.co.uk](http://www.cobal.co.uk)

Brookway, Hambridge Lane  
Newbury, RG14 5RY

### Follow us

[linkedin.com/company/cobal-sign-systems-limited](https://www.linkedin.com/company/cobal-sign-systems-limited)

[instagram.com/cobal\\_signs](https://www.instagram.com/cobal_signs)

[pinterest.co.uk/cobalsigns](https://www.pinterest.co.uk/cobalsigns)